



January/February 2017

RMS Mission statement: The mission of RMS is to provide a safe, positive and caring environment that helps all students develop into principled, lifelong learners and critical thinkers. We will prepare students for success in a global community and to understand that other people with their differences can also be right.



© International Baccalaureate Organization 2012



The Reflective Robin

Robbinsdale Middle School
an International Baccalaureate
World School

It's Spanish Day at the Minnesota Zoo!



MINNESOTA ZOO

On February 15, 2017, 6th and 8th grade students enrolled in a heritage language Spanish class will be going to the Minnesota Zoo for Spanish day. You may wonder what the difference is between a *heritage speaker* and a *native speaker*. *Native Spanish speakers are usually born in a country where Spanish is spoken, and consider it to be their first language. Heritage Spanish speakers are usually born and grow up in a country that does not speak Spanish, but are raised in a home where Spanish is spoken. Therefore they speak or at least understand Spanish, and are some degree bilingual in Spanish and in English.*

Some exciting news about the trip: This is the first year 8th graders will be presenting in Spanish about an animal during the event. We received a grant from the Seven Dreams Foundation to pay for supplies for the presentations as well as substitutes so that all the RMS Spanish Teachers can attend the field trip. We also received a grant from the MN Zoo school bus fund to pay for our transportation costs. We are very appreciative of these grants, and we are excited to see the students' presentations! If you speak Spanish and would like to help chaperon this field trip, please contact Sylvia_Suares@rdale.org (763.504.7532) or Stephanie_Pastrana@rdale.org

- Learner Profile
- IB Learners are:
- Inquirers**
- Knowledgeable**
- Thinkers**
- Communicators**
- Principled**
- Open-Minded**
- Caring**
- Risk-Takers**
- Balanced**
- Reflective**

IMPORTANT DATES:

Tuesday, January 24:

Start of 2nd semester

Monday, February 20:

Presidents Day

No School

Wednesday, February 22:

PTAC Meeting @RMS 6pm

Monday, March 6:

No School for students

Teacher PD Day

Upcoming IMPORTANT dates:

MCA testing dates:

Math:

Tuesday and Thursday

April 19 and 20

Reading:

Tues., Wed., Thurs.

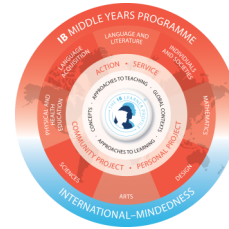
April 25, 26 and 27

Science:

Wednesday and Thursday

May 3 and 4

(See Dr. Nolan notes on page 2 for more information)



Service Learning in the Middle Years Program

Service Learning, community service, taking action, and volunteering are all ways to describe service at Robbinsdale Middle School. But service isn't just about helping other people or helping in the community. It is bigger than that. Service learning is magical in that while we are serving our communities, we are also serving ourselves. How many times have you heard someone who has volunteered say that they got as much out of it as the people they helped? Sometimes even more. That is the goal.

We have many school groups such as TEAM McDaniel, Student Council, and National Junior Honor Society whose main purpose is giving back to the community. They have given countless hours to people in need and causes they believe in. But that's not everyone...we can do better. The best service learning is service that is self-driven. One of the main goals for students in the MYP is for students to become critical thinkers in what they learn. That means they continue to reflect and ask themselves: "Now what?" as a result of their learning. This leads into action. That is the best we can hope for.

The 8th grade Community Project: Currently, we are in year one – *bringing awareness* – of implementing the IB MYP **Community Project**. This will be a 2-3 year process – meaning our 6th grade students will be our first group of students since we have been an authorized school to complete the MYP Community Project .

The community project is intended for 8th graders. The years leading up to 8th grade help prepare students. The project focuses on community and service and gives students an opportunity to 1. research the needs in various communities, 2. choose a need that they connect with or have a passion for, 3. plan and address those needs through service learning, and lastly evaluate and reflect on their efforts.

As we build awareness around community and service you may notice a more intentional approach including encouragement for all students to participate. Parents can partner with us by giving their kids exposure to community service activities and asking them to reflect on their experiences.

More information will be forthcoming about the 8th grade community project.

2016-17 Maud Hart Lovelace Book Award Nominations

Division II: grades 6-8

- **Almost Home** by Joan Bauer
- **Better Nate than Ever** by Tim Federle
- **Breaking Stalin's Nose** by Eugene Yelchin
- **Doll Bones** by Holly Black
- **El Deafo** by Cece Bell
- **Flying the Dragon** by Natalie Dias Lorenzi
- **Freaking** by Lana Krumwiede
- **Ghetto Cowboy** by Greg Neri
- **Great Greene Heist** by Varian Johnson
- **I Kill the Mockingbird** by Paul Acampora
- **Never Say Die** by Will Hobbs
- **Nickel Bay Nick** by Dean Pitchford

View the trailers for all 12 books:

<http://bit.do/rmsmhl>



Notes and Reminders:

Call the RMS attendance line (763-504-4810) to report all absences.

A MESSAGE FROM THE NURSE:

ATTENTION RMS 6TH GRADE FAMILIES:

To start 7th grade the state of MN requires 7th graders to have the Meningitis and Tdap (tetanus, diphtheria, and pertussis -whooping cough) shots or a notary signed conscientious objection or medical waiver. We will be sending out information in March about the shots and what specific shots your student is missing for 7th grade. Questions: contact nurse Val or Health Assistant Shirley at the Health Office at 763-5504-4809

TECHNOLOGY NEWS!

Chromebook reminders:



1. Charge your Chromebook every night.
2. Bring your Chromebook to school everyday!
3. Always use your case when transporting your Chromebook between home and school as well as from class to class.
4. Treat your Chromebook like your phone—with love!



Robbinsdale Middle School

3730 Toledo Ave. N.

Robbinsdale, MN 55422

Ph. 763-504-4800

Fax: 763-504- 4832

RMS Website: rms.rdale.org

RMS IB website:

rmsibmyp.weebly.com

PTAC contact info:

rmsptac@gmail.com

PLEASE
PLACE
STAMP
HERE