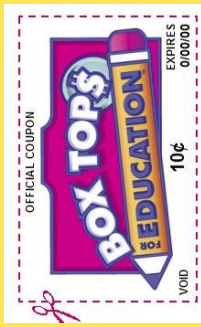




Fun & easy ways to get involved with Robbinsdale Middle School:
 Clip Box Tops from many grocery items and bring them in to your Advisory class for this on-going, easy RMS fundraiser!
 Visit our website: rms.rdale.org
 Join our Parent Teacher Advisory Council, contact rmsptac@gmail.com
 Donate to our Maker Space for students, located soon in the RMS Media Center!



Robbinsdale Middle School

an International Baccalaureate World School

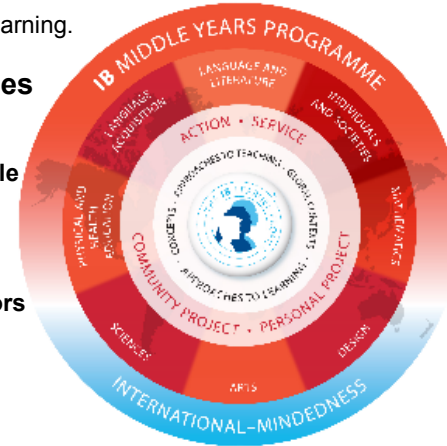
IBMYP: The Learner Profile and ATL Skills



You may have wondered, what is the purpose of advisory? This year RMS students and staff begin their day in advisory class. While this is not a new concept in middle schools, what is intentionally done in advisory at RMS may be different. Not only is advisory a place where “housekeeping” activities such as attendance and announcements take place, it is also a place where students work on their citizenship skills and learning skills - both important parts in the IBMYP where the student is at the center of focus when it comes to learning.

Learner Profiles

- Inquirers
- Knowledgeable
- Caring
- Thinkers
- Principled
- Communicators
- Open-minded
- Balanced
- Reflective



ATL Categories

- Communication
- Social skills
- Self-management
- Research skills
- Thinking skills

In advisory, each day of the week is themed:

- Monday Morning Meeting
- Tuesday Team Building
- Workday Wednesday
- Thoughtful Thursday
- Fun Friday

Planned activities on these days center around the **IB Learner Profile** traits and the **Approaches to Learning (ATL)** skills. For example, on Workday Wednesdays students are learning self-management skills, and Thoughtful Thursdays students engage in activities centered around a Learner Profile trait. Advisory is not the end to working on the **Learner Profile** traits and **ATL skills** in our school day. The Learner Profile is part of who we are and what we do – whether it be in the classrooms, hallways, or lunchroom. Students are recognized through our care cards which are earned by exhibiting these traits throughout the school; we also use these traits to help identify our students of the month. In addition, all units of work identify and teach specific ATL skills needed to be successful in the unit being studied.

Winter Break is just around the corner and so is applying for AVID for the 2016-17 School Year.

Important dates to know:

- Jan. 13 AVID Information Night for New Applicants
- Jan. 11-15 AVID Presentations in 6-7th Grade Classes
- Jan. 27 Applications Due to RMS Guidance Office

<http://www.avid.org/what-is-avid.ashx>

Help us build a MAKER SPACE in the Media Center:

WHAT: a student-centered hub of exploration for project-based learning, collaboration, and interdisciplinary engagement

WHY: you can extend your classroom learning and build, tinker, engineer, create, and make according to your own interests and at your own pace

HOW: through your donations of Legos, gears, puzzles, computer pieces, Tinker Toys, mechanical items, craft items, tapes, glues, tools, and more!

Donate WHERE: in the MAIN OFFICE Maker Space Box - THANK YOU!!



RMS Students of the Month (November; listed alphabetically): Nathaly A, Tenneh A, Tayveon B, Nana B, LaTeara B, Brooke C, Victoria C, Mameki D, Rosa D-S, Jose G, Coran G, Keshawn H, Anna H, Sarah L, Kaylee M, Tabitha M, Lauren N, Autumn O, Matsandra N, Sharae S, Jaiden S, Isaiah S, Abigail S, Ammy V, Kenneth W, Mandrell Y, Zay'Vontay

STEAM @ RMS... Why Code?

According to Code.org, "Computer science drives job growth and innovation throughout our economy and society. Computing occupations make up two-thirds of all projected new careers in STEM fields, making Computer Science one of the most in-demand college degrees."

At RMS we feel it is essential to expose all students to the field of computer science through coding classes, as it not only teaches them about technology, but also how to think differently about problem solving, and it can transform the way students think about the world. Computer science classes like Coding can put students on the path toward some of the highest paying, and fastest growing jobs in America; and many computer software jobs are outside of the tech industry – in banking, retail, government, entertainment, and medical fields. No matter what career our students want to pursue they will need to learn problem solving, data analysis, and computational thinking to be prepared for the 21st century.



Robbinsdale Middle School
an International Baccalaureate World School



Dr. Nolan's Notes:

We are in the process of implementing IBMYP at RMS with fidelity. The MYP is a challenging framework that encourages students to make practical connections between their studies and the real world. With that being said, we are meeting with parents in the next few months to discuss the value of a challenging and rigorous curriculum. These meeting locations and times will be forwarded within a week or so. The goal of the meetings will be to educate parents and stakeholders on MYP and how we are moving to strengthen IBMYP and support our Unified District Plan. Please make sure you check our website and Dr. Nolan Notes for more information.

Important December Dates:

PTAC meeting
December 7 6pm

The Surprise Party Fall Play:
\$5 Adults
\$3 Students
Friday December 4 7pm
Saturday December 5 4pm and 7pm

Fall Music Concerts:

Dec.1 **8th grade band** at Cooper

Dec. 10 **6th grade band, choir, orchestra** at RMS

Dec. 14 **7th grade band and orchestra** at RMS

Dec. 15 **8th grade orchestra** at Cooper

Dec. 17 **7th and 8th grade choir** at RMS

Winter break
Dec. 21 - Jan. 1

One Great Website!

Here is a list of websites offered by your teachers for you and your families to explore over winter break...Fun and educational!

- Study Math, Science, and English: <https://app.studyisland.com/cfw/login/>
- Current news articles: <https://newsela.com/>
- College & career ready website: gpslifeplan.org/
- Answers to what you wonder: wonderopolis.org
- Make music: [Buttonbass.com](https://buttonbass.com)
- Science activities/videos: hmi.org/biointeractive
- Get speedy & accurate at typing: www.typingclub.com
- Math-based games: coolmath.com/
- Explore coding: www.scratch.mit.edu or <https://studio.code.org/>
- Music: musictechteacher.com/music_quizzes/music_quizzes.htm
- Animated research content: www.brainpop.com

Go to rms.rdale.org > Quick Links > RMS Newsletters to view this newsletter online and follow the hyperlinks (Ctrl + click on link) to go to these great websites!